

13th February 2017

# E-Zine



**Supporting™  
Communities**  
Empowering Society

Welcome to Supporting Communities 70th Edition of E-Zine, bringing you Best Practice from the Community Sector; Funding and Training Updates and Policy Developments in Northern Ireland, Great Britain and Republic of Ireland.

## Supporting Communities Named as New 'Independent Tenant Organisation'



Department for  
**Communities**

Supporting Communities were this week named as the Independent Tenant Organisation (ITO) following a procurement exercise carried out by the Dept of Communities (DfC). Broadly speaking, the ITO will be tasked with the responsibility for overseeing the implementation of the Tenant Participation Strategy for NI 2015-2020 and to support all Social Housing tenants and staff to develop the skills needed for effective participation.

The announcement about the ITO follows on from the introduction of the Department for Communities (DfC) [Tenant Participation Strategy 2015 – 2020](#) in January 2016 which was designed specifically to increase tenant involvement in the delivery of, and in turn the decisions that impact on, social housing services across Northern Ireland. The Strategy is for Social landlords, namely the Housing Executive and Registered Social Housing Providers. It is for Social Housing tenants, other residents, homeless people, those living in hostel accommodation, and other service users. The strategy aims to improve the quality of Social Housing services for tenants and landlords alike.

Responding to the announcement about the ITO, Colm McDaid, Chief Executive of Supporting Communities, commented; *"I am delighted that Supporting Communities has been appointed as the ITO by DfC to oversee the implementation of the Tenant Participation Strategy, the first of its kind for NI and a hugely important document for all social landlords and tenants alike."*

Colm continued; *"Supporting Communities, in its various guises, has been championing tenant participation in NI for over 37 years advising, supporting, enabling and ultimately empowering communities in all four corners of our province. The experience and expertise that Supporting Communities has gained and developed over three decades provides the Department for Communities, and Social*



*Landlords alike, with a valuable resource in further enhancing tenant participation in Northern Ireland, particularly over the lifetime of the current TP Strategy and well beyond."*

The key requirements of the ITO include the following:

- To lobby for, promote, develop, provide and maintain tenant services within the Social Housing sector.
- To provide guidance on:
  - Setting up and maintaining tenant panels or community groups at a local level;
  - Provide advice on developing tenant participation strategies or activities as required;
  - Encourage and develop effective tenant involvement in governance and board membership; and
  - Develop tenant-based surveys.
- To be responsible for the creation of a Housing Policy Panel (HPP). The panel will represent social housing tenants in the development and scrutiny of departmental policies that are relevant to their interests.
- To be responsible for the creation of a Tenant Advocate (TA). Amongst other responsibilities, the advocate will monitor the delivery of the Tenant Participation Strategy.
- To monitor progress on the implementation of the DfC's Tenant Participation Strategy 2015 – 2020.
- To develop guidance and provide training for both tenant and landlords that supports the key elements of the Tenant Participation Strategy.

In welcoming the news, Supporting Communities Chair - Lorraine Campbell (pictured left) said; *"Supporting Communities has a long tradition of promoting, developing and sustaining effective tenant participation for the social housing sector in NI. We look forward to continuing to provide that support to all social landlords in the future."*

*"We know that involving tenants not only helps landlords deliver a better service but also helps provide better value for the money. Supporting Communities looks forward to playing our part as the Independent Tenant Organisation in achieving these benefits for all social landlords."*

# Community Cohesion Diversity Calendar 2017



The Housing Executive has launched its 2017 Community Cohesion Diversity Calendar.

The Calendar has been produced in partnership with Diversiton and it contains over 300 notable dates including holy days for many religions, special events, festivals and bank holidays.

[Download the Community Cohesion Diversity Calendar 2017 \( !\[\]\(0f848bbd71cef6b345273b16f905912a\_img.jpg\) 4216 KB\)](#)

Please contact Linda Hutchinson if you would like a printed copy for your office or for your work contacts.

The Housing Executive hopes that the calendar will:

- ◆ provide important daily information on dates, holidays and festivals, for tenants, managers and staff
- ◆ ensure every person can have immediate access – at work and at home
- ◆ encourage self learning about diversity and personal development
- ◆ support cohesion, diversity, cultural and equality initiatives and
- ◆ promote awareness of diversity

## MAG Position Paper - Regeneration: The Value of our Built Heritage



The Department for Communities' Ministerial Advisory Group (MAG) for Architecture and the Built Environment for Northern Ireland launched the Position Paper, 'Regeneration: The Value of our Built Heritage' today. This paper sets out the potential value of effective architectural regeneration throughout our villages, towns and cities.

- Increasing engagement with the public about the importance of built heritage
- Creating more Conservation Areas
- Supporting further heritage work in the voluntary and community sector

Launched at a lunchtime seminar at Belfast's Linen Hall Library by keynote speaker Dr Bill Wolsey OBE of the Beannchor Group, with almost 90 ninety attendees from across the public and private sectors, as well as heritage and academia, the report highlights Northern Ireland's unique architectural heritage as well as the social and economic value of older building stock, and the added qualities it can bring to our communities.

Ian Maye, Deputy Secretary of Community Cohesion, Department for Communities commented; *"The Department welcomes this Paper and would like to thank and commend the Ministerial Advisory Group for their comprehensive report. It clearly sets out the value of dedicated architectural restoration, and how it can help realise the potential of Northern Ireland's communities. We particularly welcome the recommendations which clearly define ways forward to develop - and indeed redevelop - our architectural infrastructure and surrounding areas, which our people will wish to visit, work and live in, and will ultimately contribute to our vision of creating attractive and bustling communities."*

The Paper details how regeneration can encourage more people to want to visit, work and live in town and city centres, making 10 recommendations, including;

## Sign up and cycle with Belfast Bikes!

If you haven't already signed up for Belfast Bikes, it's a great way to get about.

There are currently 40 Belfast Bikes docking stations across the city, including one just outside Shankill Leisure Centre with further expansion on the cards this year.

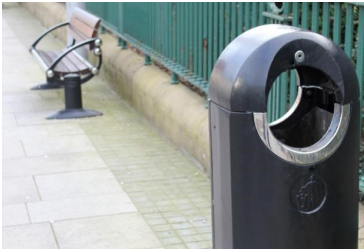
An annual subscription costs just £20 or if you just want to give it a go, you can buy a casual three day subscription for £5. Once you've registered, the first 30 minutes of each journey is free! There's a small incremental charge for longer journeys, but most people use Belfast Bikes for short trips.



Cycling to work or the shops instead of taking the car, is a time-efficient way to combine regular exercise with your everyday routine. It also enables you to do your bit for the environment – and it's great fun too!

Once you've registered your details, the scheme is easy to use. Simply rent a bicycle at one of the docking stations via the Nextbike app or the Belfast Bikes terminal. Once you arrive at your destination, lock the bike in securely at a nearby docking station ready for the next person to use.

To sign up, go to [www.belfastbikes.co.uk](http://www.belfastbikes.co.uk) or call 034 3357 1551. You can also register at any docking station terminal or by downloading the Nextbike app.



## Minister Givan extends Public Realm Programme to Rural Towns and Villages

Communities Minister Paul Givan has announced that he is extending his Department's scheme to regenerate public spaces to small towns and villages.

The Department's Public Realm Programme which includes improvements such as upgrading pavements, lighting and street furniture, was previously restricted to towns and cities with populations over 5,000. The scheme will now be extended to towns and villages with a population of more than 1,000.

The Minister stated: "As I outlined in November 2016 in my statement to the Assembly, there are many small settlements which serve the same role in the community as larger places but which, because of our current practice, do not directly benefit from the investment in the enhancement of public and shared space available to their larger neighbours. I have now decided that the Public Realm Programme should be extended to include settlements with populations of 1,000 persons or more. A phased approach will be adopted and we will begin with settlements of over 2,500 persons. The scale and speed of implementation will be dependent on the budget available.

*Throughout my time as Minister I have seen the impact of public realm schemes such as those in Cookstown, Belfast, Larne and Lisburn, with many more schemes underway across Northern Ireland. I want to ensure that people who live, shop and socialise in smaller settlements have the same opportunity to access investment for public space developments as their counterparts in our larger towns and cities."*

The Department will also work closely with local Councils and the Department for Agriculture, Environment and Rural Affairs in the implementation of this programme.

---

## Co-operative Alternatives supports Cohousing NI



Co-operative Alternatives is currently exploring the potential of cohousing schemes with an emerging co-operative enterprise, Cohousing NI, as part of the Go Social Programme run by Belfast City Council in support of new social enterprises and co-operatives.

Joanna McMinn, one of the founder members, said: "Cohousing is a relatively new concept for Northern Ireland, indeed there are no cohousing initiatives currently on the island of Ireland and Co-housing NI believe that they could become a popular and effective form of housing in local communities here." Cohousing communities are created and run by residents.

They are places where people know each other well and have signed up to be part of a community. Residents have private homes complete with all the regular stuff – kitchen, bathroom, living and sleeping space – yet they also have use of great shared facilities such as a common house, gardens, car pools and micro renewable energy schemes.

Through the Go Social programme, Co-operative Alternatives organised a virtual roundtable with co-housing initiatives in Leeds and London just before Christmas.

If you want to hear and view the full presentation of Leeds Community Homes, please visit <http://www.coopalternatives.coop/news/community/>

You can also find out more information on the Cohousing NI Facebook page

---

## Assembly Update



**The Northern Ireland Assembly is now dissolved. But what does that mean?**

**Find out here.**

Dissolution is the name given to the period of time between the announcement of an Assembly election, until the final election results. In this case, the Assembly was dissolved at 00:01 on Thursday 26 January, 2017. The elections will take place on Thursday 2 March, 2017.

Following the dissolution of the Northern Ireland Assembly, all MLA seats became vacant and no Plenary or Committee business takes place.

It was agreed during the Stormont Fresh Start Agreement, signed in November 2015, that the number of Assembly Members should be reduced at the next election from six to five members per constituency from the first "Assembly election after the May 2016 election". Therefore, the number of MLA seats has been reduced from 108 to 90, meaning five MLAs will be elected in each of the 18 constituencies.

MLAs who were in post during the 2016/17 Mandate cease to be Members as soon as the Assembly is dissolved. They revert to being members of the public and lose privileges associated with being an MLA, to ensure that former MLAs do not have an advantage above other candidates.

Those who wish to be MLAs again must stand again as candidates for election.

As the Northern Ireland Assembly and the Government are two separate institutions, Government Ministers remain in office during dissolution, to manage and oversee the work of their Departments, until polling day (the day of the election).

The Speaker (currently Robin Newton), along with Principal Deputy Speaker (currently Caitriona Ruane), and Deputy Speakers (currently Danny Kennedy and Patsy McGlone) remain in office until a new Speaker is elected at the first meeting of the new Assembly.

### Questions to the Minister for Communities before Dissolution

Housing Rights have provided a digest of written and oral questions to the Minister for Communities, Paul Givan MLA.

The digest is available at; <http://housingrights.org.uk/news/assembly-roundup-january-2017>

---

## Consultations



### Private Rented Sector in Northern Ireland - Proposals for Change

Department for Communities

<https://www.communities-ni.gov.uk/consultations/private-rented-sector-northern-ireland-proposals-change>

**Closing date; 3rd April 2017**

### Draft Northern Ireland Policing Plan for 2017-2018

Northern Ireland Policing Board

<https://www.nipolicingboard.org.uk/consulting-draft-northern-ireland-policing-plan-2017-2018>

**Closing date; 20<sup>th</sup> February 2017**

### Knowledge Framework (Education Strategy)

Department of Agriculture, Environment and Rural Affairs

<https://www.daera-ni.gov.uk/consultations/daera-knowledge-framework-education-strategy>

**Closing date; 27<sup>th</sup> February 2017**

### Children and Young People's Strategy 2017 – 2027

Department of Education

<https://www.education-ni.gov.uk/consultations/children-and-young-peoples-strategy-2017-2027>

**Closing date; 27<sup>th</sup> February 2017**

### Regulations restricting smoking in private vehicles when children are present

Department of Health

<https://www.health-ni.gov.uk/consultations/regulations-restricting-smoking-private-vehicles-when-children-are-present>

**Closing date; 3<sup>rd</sup> March 2017**

---

# Special Focus

## Department for Communities proposals on Private Rented Sector

The Department for Communities has released its proposals on the Private Rented Sector in Northern Ireland.



Housing Rights has published a useful concise guide to the Departments proposals.

### The proposals

The Department have made proposals relating to supply; affordability; security of tenure; tenancy management; property standards; dispute resolution; and tenancy deposits in the Private Rented Sector (PRS).

#### Supply

- Commission work to gauge the appetite of institutional investors to invest in the private rented sector in Northern Ireland.
- Explore opportunities to use Fresh Start funding for shared housing, to incentivise the development of more mixed-tenure housing areas, including PRS housing.
- Scope the opportunities with housing associations for greater involvement in the PRS.

### Affordability

- Introduce legislation to stipulate that rents can only be increased once in any 12-month period.

### Security of tenure

- Seek to bring forward legislation, ensuring all private tenants are issued with a written agreement containing mandatory terms, regardless of the type or length of the tenancy.
- Lengthen the Notice To Quit period, for tenancies lasting longer than 12 months, from 4 weeks to 2 months.
- Seek to introduce legislation for a Fast Track Eviction Scheme, which may include mandatory grounds for possession, and provide appropriate safeguards to ensure fairness.

### Tenancy management

- Review the impact of the CIH 'Learning to Let' course, and explore funding options for an extension to the course.
- Fund a [dedicated landlord advice line](#), providing advice and information from professionally qualified advisers and helping to professionalise the sector.
- Develop a tenant information pack which landlords must provide to tenants at the start of a tenancy.
- Amend the Landlord Registration Scheme to incorporate a "fitness declaration" by the landlord

when registering; Councils could then carry out random checks on registered properties.

- Introduce a regulatory framework for all letting agents, including legislation to [ban letting fees](#).

### Property standards

- Introduce legislation, as soon as possible, to make it mandatory for private landlords to provide smoke and carbon monoxide detectors, and to carry out periodic electrical checks.
- Introduce legislation around EPC ratings, [similar to that in England](#), whereby properties must meet a certain minimum EPC rating in order to be privately let.
- Amend legislation so that all unfit properties built before 1956 – not 1945 – are [subject to rent control](#).

### Dispute Resolution

- Examine the financial case for establishing an independent housing panel for Northern Ireland.

### Tenancy deposits

- Introduce retrospective protection so all private rented deposits will be protected, irrespective of the date the tenancy started.
- Amend legislation to [remove the loophole meaning offences under the Tenancy Deposit Scheme cannot be prosecuted after 6 months have passed](#).
- Amend legislation to allow part of fixed penalties, paid by landlords, to be paid to tenants.
- Allow landlords up to 28 days – up from 14 – to protect a tenant's deposit.

### Resolving Disputes outside the Courts Seminar

Housing Rights is holding a seminar on 15 February to [explore the key issues relevant to establishing an Independent Housing Panel for Northern Ireland](#), as recommended in the Department for Communities proposals.

For more information on the work of Housing Rights, go to; <http://housingrights.org.uk/>

**Housing  
Rights**

# Publications



## NI Environment Link Publications

The most recent NIEL e-bulletin is available on the NIEL website at;  
<http://www.mailings.tc/t/r-85C731ACF46D432A2540EF23F30FEDED>

In addition, NI Environment Link has a calendar of events being run by stakeholders and member groups; to find an event of interest to you, or near you go to; <http://www.nienvironmentlink.org/events/>

---

## New Year...new catalogue!

Just arrived & hot off the press...the brand new Main Catalogue for public play areas, which is packed full of inspiration and ideas to transform your playground.

With a new look and feel, the catalogue has been designed to simplify your reading experience and also includes the NEW [Role Play Tunnel](#) range.



It's available in both printed and virtual formats. So, don't delay... request your copy by clicking [HERE](#) today!

---

## Law Centre NI

The most recent E-bulletin can be accessed at;  
<http://us7.campaign-archive1.com/?u=ae690a33dc6a1581f08bf755b&id=c0bde17b94&e=c2b6ae91b3>



## Rural Community Network

The latest edition of the Rural Policy Link is now available from the RCN.

To access the publication, go to;  
<http://www.ruralcommunitynetwork.co.uk/publications/publicationdocument.aspx?doc=610>

---

## Scope<sup>NI</sup>

NICVA has published a number of online articles considering issues such as rural schools and the Ministers' plans for the schools estate.

Scope can be accessed at; <http://scopeni.nicva.org/latest-scope-articles>



---

## Community Arts Partnership

The most recent edition of Community Arts Weekly is available at;  
<http://us4.campaign-archive1.com/?u=b8a8a675fc3c8c08286c7e4ee&id=51323912f1&e=f98d0fc214>

Here you will get access to up to date information on local community arts events, projects and funding.

There is more information and updates on the Partnerships' website at; <http://comartspartner.org/>

---

## Community Development and Health Network

The most recent edition of the CDHN e-newsletter is now available.

To access the newsletter, go to;  
<http://us9.campaign-archive1.com/?u=1efc35d04e4c921abca05f196&id=6b2d37b6bb&e=09b1f9112e>



Please click the link below to access the January 2017 edition of inpartnership – the newsletter for PCSPs which highlights local events and initiatives.  
<https://www.pcsp.org/sites/pcsp/files/media-files/inpship-Jan-17.PDF>



## NICVA Annual Report 2016

NICVA's 2016 Annual Report showcasing our year is now available online. The report and financial accounts provides an overview of performance and achievements in 2015/2016.

The Report is available at: [http://www.nicva.org/2016/?utm\\_source=eNews+subscribers&utm\\_campaign=7b44db3123-eNews+-+30+January+2017&utm\\_medium=email&utm\\_term=0\\_3f6979e667-7b44db3123-313465361](http://www.nicva.org/2016/?utm_source=eNews+subscribers&utm_campaign=7b44db3123-eNews+-+30+January+2017&utm_medium=email&utm_term=0_3f6979e667-7b44db3123-313465361)



## Department for Communities

Two publications released on experiences of NI's library service, museums and science centres

The Department for Communities (DfC) today released the two publications, 'Experience of the public library service in Northern Ireland' and 'Experience of museums and science centres in Northern Ireland.'



### The main findings of the 2015/16 public library service report include:

Overall, as noted in the May 2016 headline report, there was a decline in the proportion of adults using the public library service (25%) compared with the previous years' figures. Indeed, this was the lowest figure recorded in the overall trend and was driven by a decline in females using the service.

'To borrow / return / renew books' (61%), 'to use computers for personal use' (23%) and 'to look up information / do research' (18%) were the most popular uses of the public library service amongst adult public library users.

This publication and associated tables are available on the [DfC website](#).

### The main findings of the 2015/16 museums and science centres report include:

Overall, as noted in the May 2016 headline report, there was a decline in the proportion of adults visiting museums and science centres during 2015/16 compared with the previous years' figures. This decrease was largely driven by a decrease in the proportion of adults visiting a National museum.

The most frequently cited reasons for visiting a museum or science centre were 'To see a specific exhibition/display', 'Something to interest the children' and 'General interest in the subject of the museum/collection.'

This publication and associated tables are available on the [DfC website](#).

## The Northern Ireland Housing Bulletin July – September 2016 is released

A report entitled "Northern Ireland Housing Bulletin July – September 2016" was published today by the Department for Communities (DfC).



The Northern Ireland Housing Bulletin is produced each quarter by the Analytical Services Unit of the DfC. This Bulletin contains statistics on starts and completions, homelessness, the House Price Index and new National House Building Council (NHBC) registered dwellings sales and prices.

The bulletin is available on the [Department for Communities website](#). Hard copies are available from the Analytical Services Unit, Department for Communities, 1st Floor, Lighthouse Building, Gasworks Business Park, Ormeau Road, Belfast, BT7 2JB; Telephone - (028) 9082 9255; E-mail [asu@communities-ni.gov.uk](mailto:asu@communities-ni.gov.uk)

# Events

## Chartered Institute of Housing Event

**Living in the city: planning, design and services for urban spaces - 26 April 2017, 12.30pm - 15.30pm**

This seminar will explore the regeneration of inner-urban areas, affordability of city centre living, and a range of innovative ideas that are providing the best spaces for good quality lifestyles in urban environments.

### Confirmed Speakers

Nuala Gallagher: director of city centre development, Belfast City Council  
Mark O'Donnell: director - Belfast regeneration, Department for Communities  
Greg Lloyd: emeritus professor, Ulster University  
Ciarán Fox: director, Royal Society of Ulster Architects

### Who should attend

This seminar is suitable for a range of different senior housing sector professionals including the following:

- senior managers in government, councils, Housing Executive, housing associations and the private sector
- housing strategists and policy officers
- representatives from third sector housing organisations
- planning, regeneration and finance professionals academics and consultants

Booking information

Cost: £85 (members) / £95 non-members

Go to; [http://www.cih.org/events/display/vpathDCR/templatedata/cih/events/data/northernireland/1817011\\_living\\_in\\_the\\_city](http://www.cih.org/events/display/vpathDCR/templatedata/cih/events/data/northernireland/1817011_living_in_the_city)



## Northern Ireland Housing Conference 2017

**'Delivering effective housing solutions'**  
**Wednesday 22nd March • Titanic Belfast**  
**Limited places available - register now!**

Following the collapse of the Assembly and the possibility of direct rule, budgets in Northern Ireland could potentially be cut with serious implications for the housing sector. At 31 March 2016, the social housing waiting list amounted to 37,586 households of which 22,645 were considered to be in housing stress. The Northern Ireland Housing Conference will analyse key issues including the changing role of housing associations, creating a long-term plan for quality housing provision and future opportunities including digital services.

**agendaNi**

For more info visit:

<http://www.nihousing.agendani.com/>

### Key themes for 2017

- ◆ Future housing policy in Northern Ireland
- ◆ Ensuring the supply of affordable housing
- ◆ The uneven impact of welfare reform
- ◆ Better customer engagement: Digitally transforming how you deliver services
- ◆ Design for Mental Health Plan: The importance of integrating health and housing
- ◆ The impact of Universal Credit: How will it work in practice?
- ◆ Advocating for the future of Supporting People
- ◆ Developing housing projects under the new planning system
- ◆ Reclassification of Housing Associations

## Preparing for Brexit Seminar:

**Three perspectives on leaving the European Union**

**Thursday 30th March • Baby Grand, Belfast - Inform your strategy!**

As the UK sets out its Brexit plan, this focused seminar will examine what a complete break from the single market and customs union will mean for organisations operating in Northern Ireland. Theresa May has stated that the border between NI and the Republic of Ireland will be "frictionless" – but how will this work in practice? Delegates will hear from expert speakers on the important areas that make up Brexit and the potential impact for Northern Ireland organisations. The aim of this event, sponsored by Deloitte, is to inform your strategy and response to the future challenges presented by leaving the EU amidst local political instability.

**agendaNi**

For more info visit:

<http://www.brexit.agendani.com/>

### Key themes:

- ◆ Leaving the European Union: consequences for Northern Ireland
- ◆ The practical aspects of the Customs Union
- ◆ Northern Ireland and the Single Market
- ◆ Single Market and agri-food sector
- ◆ The Norwegian model
- ◆ WTO and the Northern Ireland economy
- ◆ The implications of leaving the Customs Union and the Single Market for business
- ◆ Open forum discussion on Northern Ireland's Futures



# Training



**Supporting Communities will be holding Good Governance training sessions across all areas in the coming months.** There are two sessions covering two subjects – Effective Meetings & Good Governance and Managing Charity Finances. Within each area we will be running these during the day and also in the evening to ensure that everyone has the opportunity to attend.

If you have a community base, are a member of the HCN / TSP system or are unsure of the governance regulations expected of you by the Charity Commission NI it is vitally important that you do your best to attend or have a representative from your Charity at these important training events.

For the dates of when training will be taking place in your local area please contact your Liaison Officer or visit: <http://supportingcommunities.org/latest-events>.

For any other queries please do not hesitate to contact our Training Team on: [info@supportingcommunities.org](mailto:info@supportingcommunities.org) or Tel: 028 25645676

---

## Volunteer Now Training News

### Having Sufficient Income to Sustain Volunteering Activities

**21st February 2017, 10.00am-1.00pm**

**Venue: Volunteer Now**

**Cost: £45 + VAT**

*Volunteering needs resourced - it is not free.*

Attend this masterclass and gain new skills to support the completion of funding applications and hear about trusts, foundations and other funding bodies that may invest in your volunteering organisation/ project.

Certificate of Attendance is awarded at the end of this masterclass.  
Delivered by NI Fundraising.

---

### Keeping Children Safe: An Introduction

**23rd February 2017, 6:30-9.30pm**

**Venue: Fermanagh House, Broadmeadow Place, Enniskillen, BT74 7HR**

**Cost: FREE**

This is a FREE 3 hour basic awareness course for those working with children and young people, for those registered with the Education Authority. The following course is being funded by the Education Authority for those in the voluntary youth sector who are registered and/or funded through the Education Authority.

Keeping Children Safe Training is delivered by accredited trainers with experience of safeguarding issues. Participants receive a certificate on completion of the full course.

This 3 hour course covers:

- legal context for keeping children safe
- types of abuse including online, grooming and exploitation
- signs and indicators
- procedures for reporting concerns
- relevance of code of behaviour for staff/volunteers eg: e-safety issues.



**KEEPING SAFE**



*Places are allocated on a first come, first served basis and are limited. If courses are fully booked your details will be placed on a waiting list for future courses.*

For other areas, please view the training calendar by clicking [here](#).  
For further information contact: [claire.maddison@volunteernow.co.uk](mailto:claire.maddison@volunteernow.co.uk)



# Funding



## Groundwork NI: Alpha Programme

The Alpha Programme, launched by Groundwork NI awards grants to incredible community and biodiversity projects, supporting communities to help bring their plans for positive change to reality.

The Alpha Programme, administered by Groundwork NI, distributes Landfill Tax Credits generated from the Mullaghglass Landfill site just outside Lisburn. Grants are available to fund projects making a positive impact at ground level, either developing facilities for community use or encouraging bio-diversity and environmental improvements.

Funding is available under two grants strands during 2017:

- Alpha Main Grants Programme (£10k to £50k)
- Alpha Small Grants Programme (£3k to £10k)

The Small Grants Programme was introduced in 2017. This initiative is designed to support smaller community amenity and biodiversity projects, with between £3k and £10k available. It recognises that in many cases a relatively small amount of capital funding, allied to local commitment and enthusiasm, can make a significant difference to communities and the environment.

The Main Grants Programme remains, with between £10k and £50k available under this strand. However, applicants must now be able to reimburse Alpha Resource Management for 10% of any grant awarded. This reflects the element of the Landfill Communities Fund funding which is not a tax rebate.

Another key change in 2017 is the extension of the eligible project location radius from 10 miles to 15 miles from Mullaghglass landfill site. This brings places such as Antrim, Lurgan, Ballynahinch and Comber into the area eligible to receive funding.

**The next closing date for application is (12 Noon) - 31st March 2017**

For further information and additional information required the funding criteria visit;  
<http://www.groundwork.org.uk/Sites/northernireland/pages/the-alpha-programme-ni>

## Grants for Projects in Northern Ireland Supporting Older People

Trusthouse Charitable Foundation is running a one-off grants programme with a budget of £110,000 in 2017 giving grants of £1,000 to £12,000 to projects supporting older people, which are located in areas of socio-economic deprivation in Northern Ireland.

They have a preference for work which helps people with dementia, but are open to any older people's project which will improve the quality of life and wellbeing of older people, including addressing issues of loneliness and isolation.

The programme opens on **1<sup>st</sup> February 2017** and all applications must be received by **31<sup>st</sup> March 2017**

Please click on the link below for more details:  
<http://trusthousecharitablefoundation.org.uk/notice/older-people-project-in-northern-ireland/>

The Trusthouse  
Charitable Foundation

## Galaxy Hot Chocolate Fund

Small grants are available to support a wide variety of warm hearted projects run by local community groups, schools and

charities across the UK and Ireland. Open to individuals aged 18 or over, organisations and clubs based in the UK or the Republic of Ireland, excluding employees of the Promoter, their families, agents and anyone else professionally connected with this promotion.

**The closing date for applications is on 26<sup>th</sup> February 2017**

For further information, visit  
[www.galaxyhotchocolate.com](http://www.galaxyhotchocolate.com)



Funding cont'd

## Irish Youth Foundation UK Open to Applications

The Irish Youth Foundation provides small and standard grants to voluntary organisations, community groups and local charities in the UK. Applicants must be welfare groups working for the benefit of Irish children and young people.

The funding is for projects which benefit young Irish people and children up to the age of 30 years who are living in England, Scotland and Wales and up to 25 years of age for those living in Northern Ireland.

To be eligible, projects should help young Irish people and their families who are disadvantaged and in need. A wide range of activities may be

funded including homelessness, employment and training, domestic violence, young offenders, combating discrimination, counselling and drug rehabilitation.

There are two levels of funding for organisations in England, Scotland and Wales:

- Small grants for up to £2,500.
- Standard grants for over £2,500 and under £10,000.

Grants of up to £5,000 are available for organisations in Northern Ireland.

**The deadline for applications is 17 February 2017.**

For further information, visit,  
<http://www.iyf.org.uk/apply-for-a-grant/>

---

## Prince's Countryside Fund

Projects which support the provision of activity in rural areas and help rural areas to thrive. We seek applications to support activity that results in a long-term positive impact on rural communities by helping the people that live and work in the countryside.

Our grant programme currently aims to tackle the following key rural issues:

1. To improve the prospects of viability for family farm businesses
2. To sustain rural communities and drive economic vibrancy
3. To support aid delivery in emergency and building resilience



THE PRINCE'S  
COUNTRYSIDE  
FUND

**Next round opens 13th March 2017 – closing 13th April 2017.**

Application online only, for further information visit, [www.princescountrysidefund.org.uk](http://www.princescountrysidefund.org.uk)

---

## WG Edwards Charitable Foundation

Focusing on Health & Welfare & Community Innovation, this grant aims to support initiatives which benefit over 65's.

**The grants are loosely divided into Health and Community categories.**

### Health and welfare

The Foundation gives grants for refurbishment of residential care housing for the elderly and for building projects which are nearing completion. Trustees also consider the provision of equipment to enhance care and improve quality of life.

### Community and innovation

The Foundation supports community initiatives such as exercise classes for the over-65s, lunch clubs, horticultural therapy and day trips. They will also consider grants for technology projects aimed at benefitting the over-65s, however we do not fund IT for staff/volunteers.

Average grant is £2,200 with an application letter is required which details your groups & your project plans requiring funding.

**Next closing date for applications is 10th March, followed by 10th June 2017.**

For further information visit, [www.wgedwardscharitablefoundation.org.uk](http://www.wgedwardscharitablefoundation.org.uk)

---

## Royal British Legion External Grants

The Royal British Legions offers funding of up to £50,000 for specialised projects or services for serving and/or ex-Service personnel and/or their families that are not already being provided by the Legion and that are in line with the Legion's funding priorities.

The priorities are:

- Employment and training
- Family support
- Homelessness and outreach
- Supporting the elderly



Applications will be considered from charitable organisations that are based in England, Wales and Northern Ireland and that have been operating for at least two years.

Faith based organisations may apply as long as their activities do not promote religion or include elements of proselytisation.

**Next deadlines: 13th February & 12th May 2017.**

For further information, visit, [www.britishlegion.org.uk](http://www.britishlegion.org.uk)

---

## Royal Voluntary Service: Sheds Grant Fund

Royal Voluntary Service, with funding from the Asda Foundation, has established a Sheds Grant Fund to provide small scale funding of £250 to £1000 to Sheds (Men's Sheds/Community Sheds) who are looking for help with either set up or early stage development costs.

**All applications / projects must address one or more of the Sheds Grant Fund objectives.**

The objectives are:

- ◆ Assisting people in setting up new Sheds.
- ◆ Helping people learn new skills and pass on existing ones.
- ◆ Increasing opportunities for community spaces where members determine the projects they work on and have a say in how their Shed develops.
- ◆ Helping communities tackle social isolation and loneliness amongst their ageing population.

Sheds applying must be:

- ◆ Run as a membership - co-ordinated by unpaid volunteers for the benefit of its members
- ◆ A member of (or willing to join) its national Men's Sheds Association
- ◆ Happy to participate in local promotional or partnership opportunities, as may arise, with their local Asda store

Funding is available to support any of the following:

- ◆ Purchasing new tools or equipment
- ◆ Building renovation costs
- ◆ Revenue costs (e.g. rent/insurance contribution/electricity)
- ◆ Promotional Materials



**The next closing date for applications is (5pm) on 5<sup>th</sup> Mar 2017**

For further information, visit

<http://www.royalvoluntaryservice.org.uk/volunteer/volunteers-leading-the-way>



Supporting Communities and  
The Heritage Lottery Fund  
are hosting a Funding Surgery  
in your Area



# Ballymena Funding Surgery

In Supporting Communities  
Head Office  
34/36 Henry Street  
Ballymena BT42 3AH

Will be held on  
**Thursday**  
**23rd February 2017**  
At  
**10.00am - 4.00pm**

**To register for an appointment contact**  
Supporting Communities Funding Officer  
Roisin on 028 77740722 or  
Email: [roisin@supportingcommunities.org](mailto:roisin@supportingcommunities.org)

The Heritage Lottery Fund will also be holding a  
Funding Clinic at this event, to book an appointment  
Contact James Lavery Tel: 028 90310120  
Direct Line: 028 90727733  
or Email: [james.lavery@hlf.org.uk](mailto:james.lavery@hlf.org.uk)

- Practical Advice on completing Successful Funding Applications
- One to One Support, Top Tips and a range of ideas to make sure your application stands out from the crowd
- Funding Enquiry Service; access information on a variety of funders!
- Information and advice on the different grant programmes available from the Heritage Lottery Fund